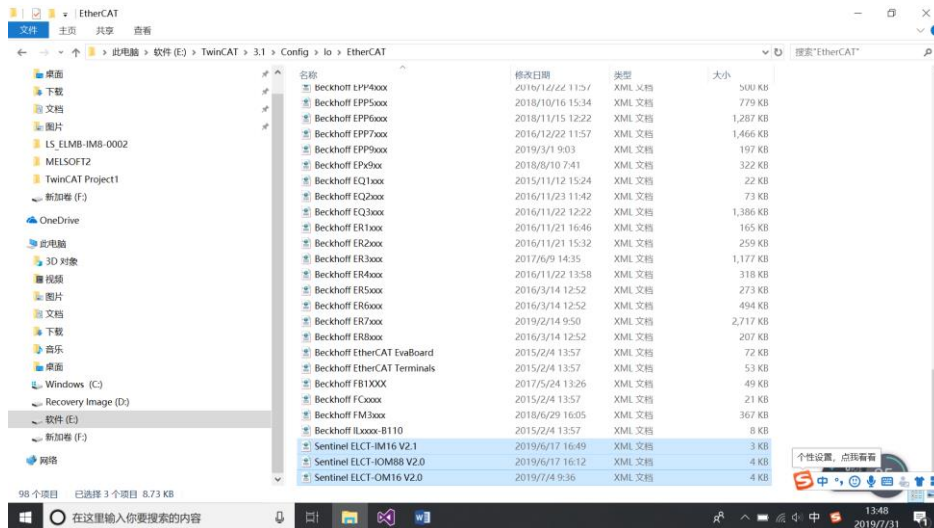


倍福 PC 组态森特奈 EtherCAT 协议

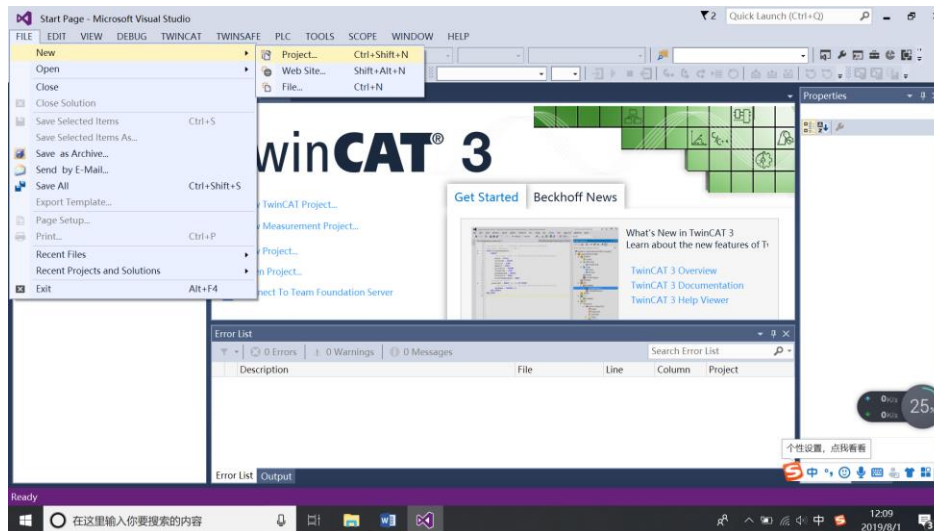
总线模块使用教程



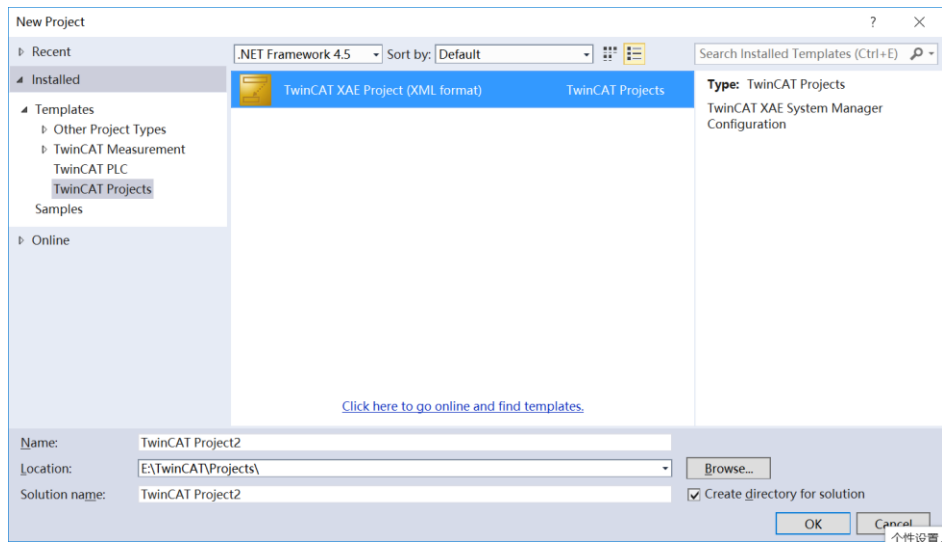
1、按如图路径，将森特奈 EtherCAT 模块的 ESI 文件复制进去



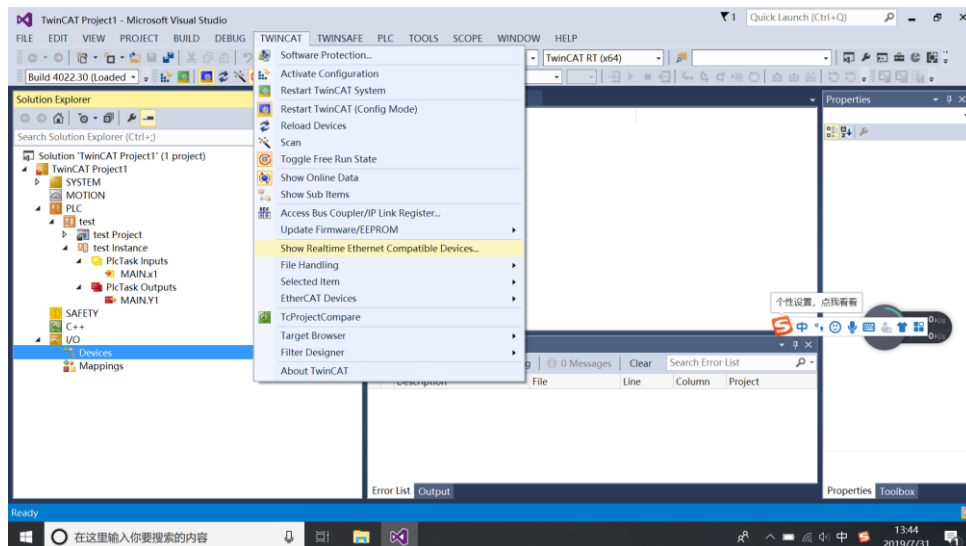
2、打开软件 TwinCAT XAE，新建一个工程



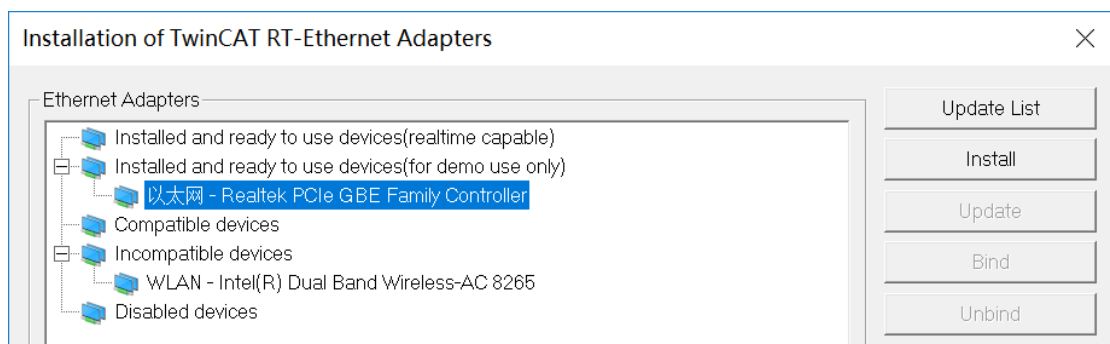
3、选择如图所示工程，并给工程取个名字（英文），并选择好存储路径，点击“ok”



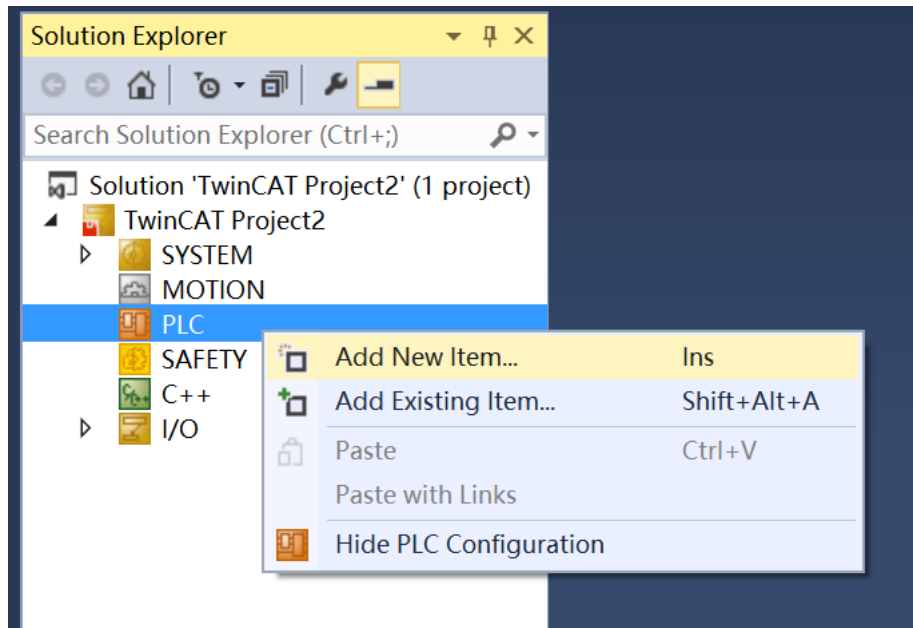
4、要把电脑网卡添加进去，“TwinCAT”---“show Realtime Ethernet Compatible Devices”



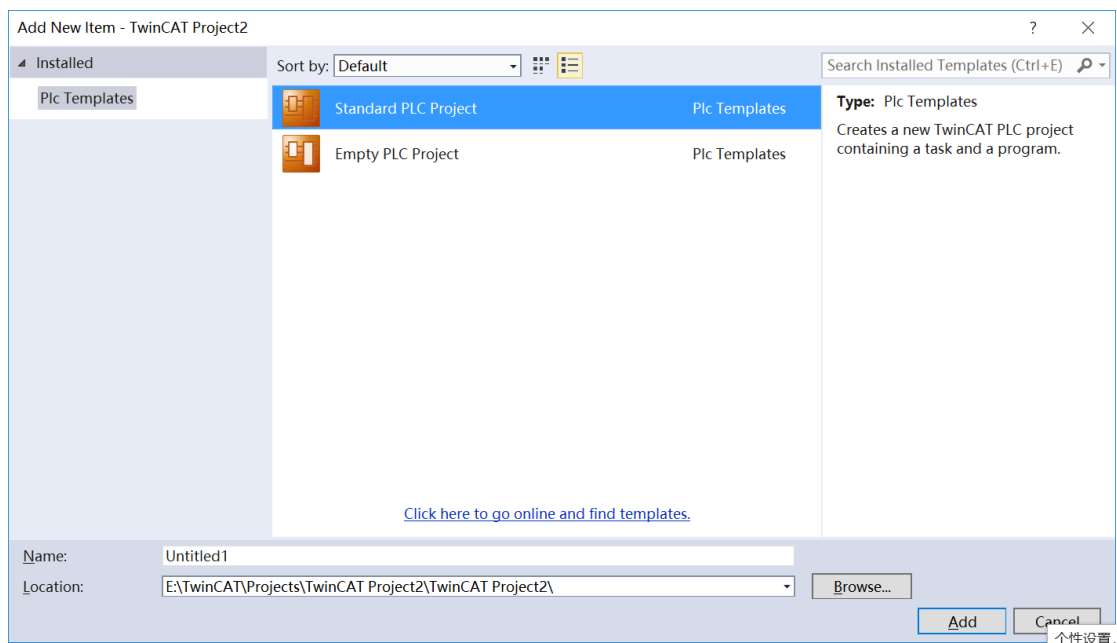
选中本机的网卡后，点击“install”



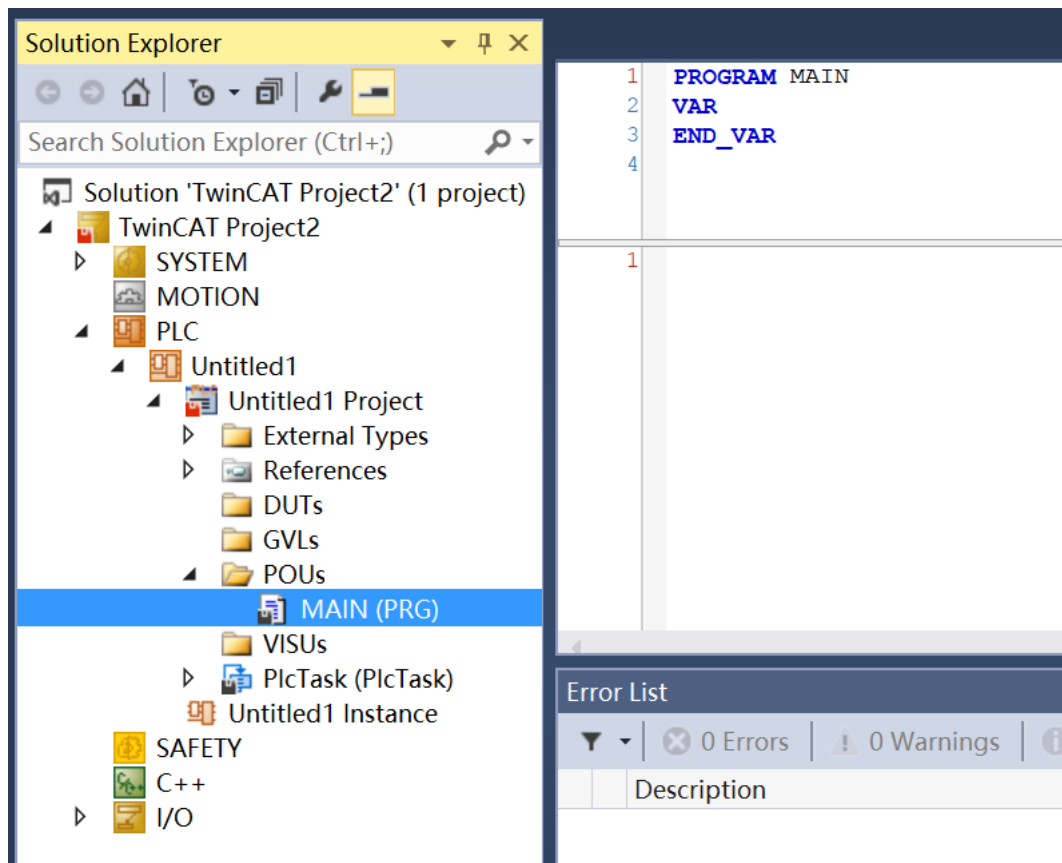
5、右键“PLC”---“Add New Item”



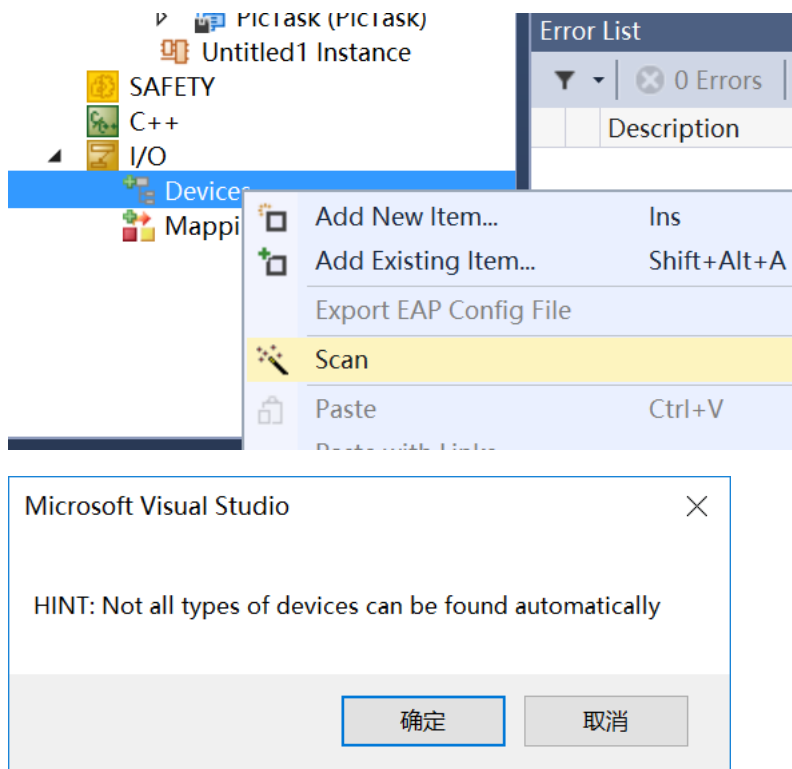
选中“Standard PLC Project”，并取一个名称，点击“Add”

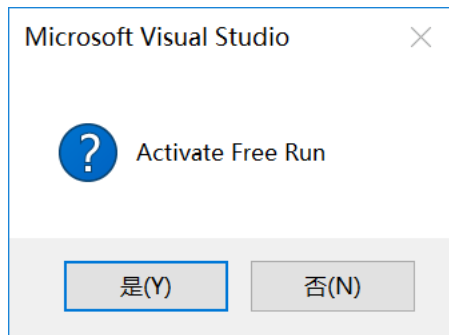
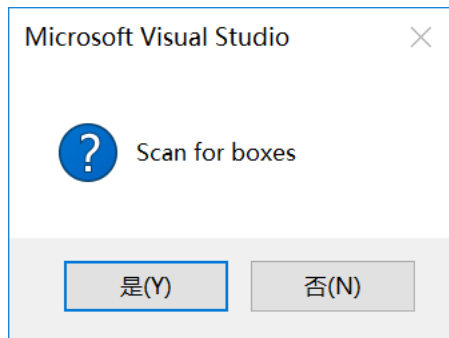
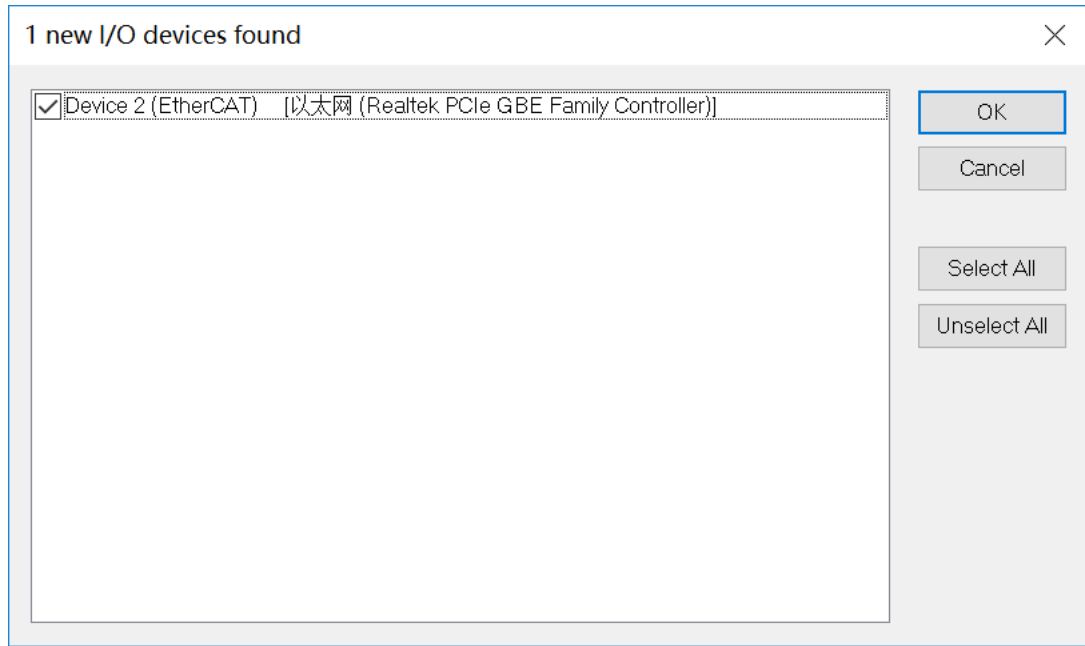


6、点击 PLC 目录下的“POUs”---MAIN (PRG)，在界面右侧即可编程

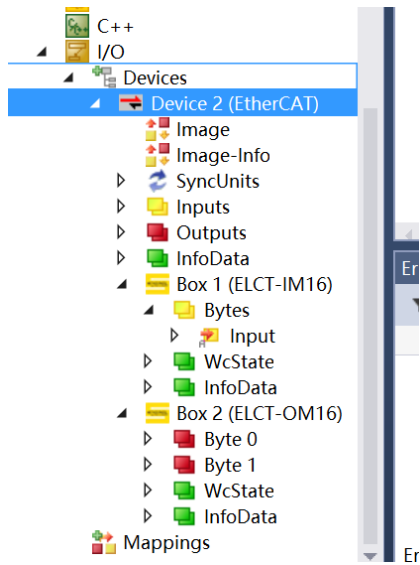


7、在“I/O”目录下，右键“Device”---Scan，进行远程 I/O 扫描，(本例中连接了一个森特奈 16 路输入模块和一个 16 路输出模块)。依次出现如下画面，依次点击“确定”---“OK”---“是”---“是”

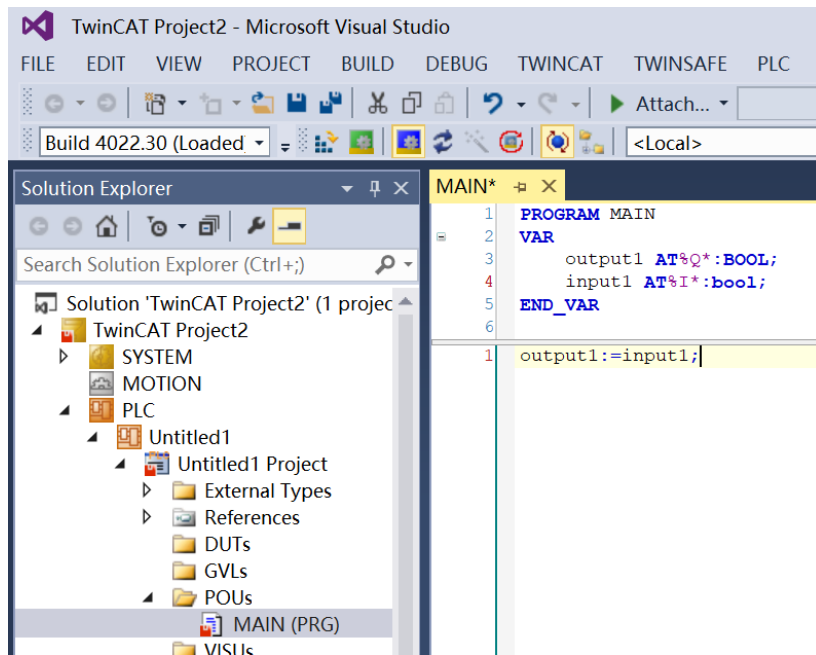




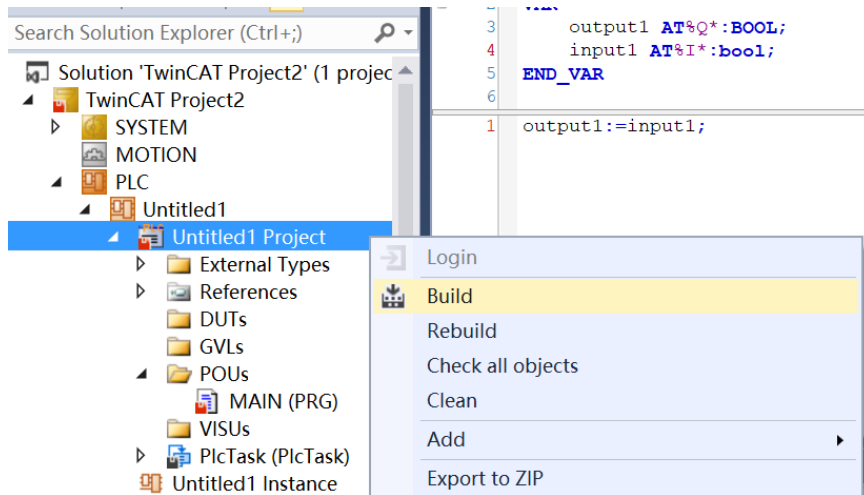
8、扫描完成后，在 Device2 (EtherCAT) 目录下就可以看见森特奈输入、输出模块



9、双击“MAIN (PRG)”，定义两个简单变量，编一段简单程序，输入导通输出

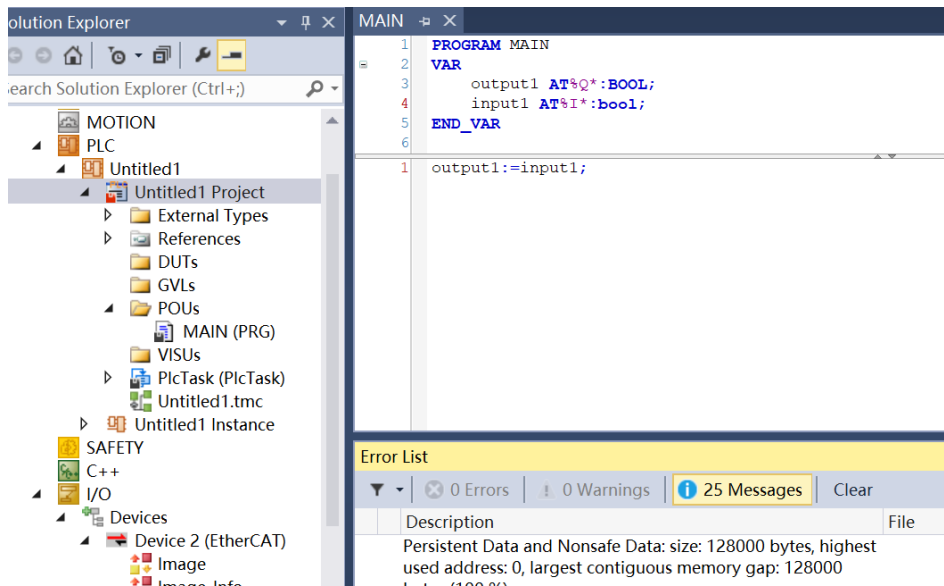


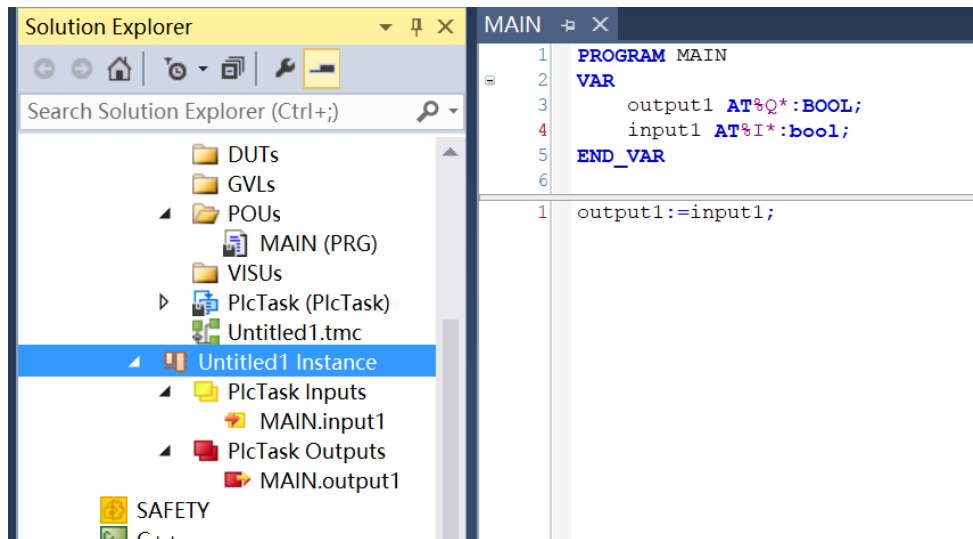
10、编写完成后，右键“Untitled1 project”---“Build”



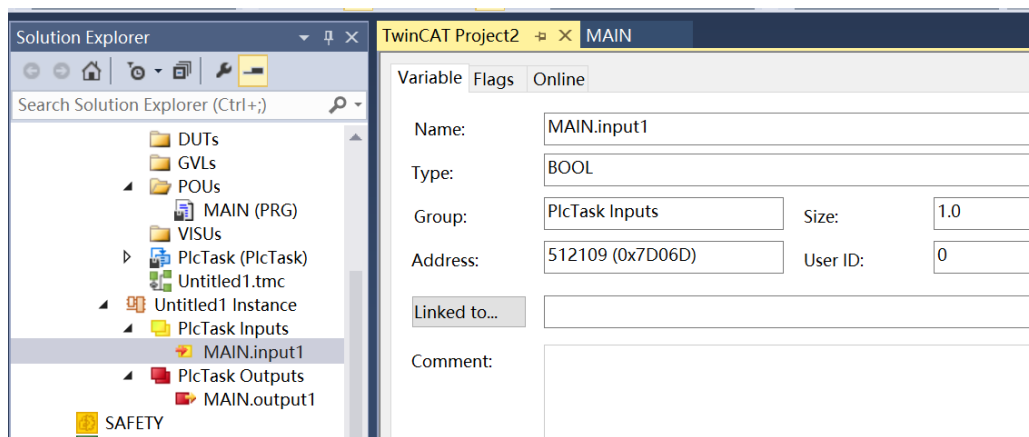
11、系统会自动编译这段代码，如果没有错误就会在消息栏中提示成功生成，并且在

“Untitled1 instance”中生成输入输出变量可供连接。

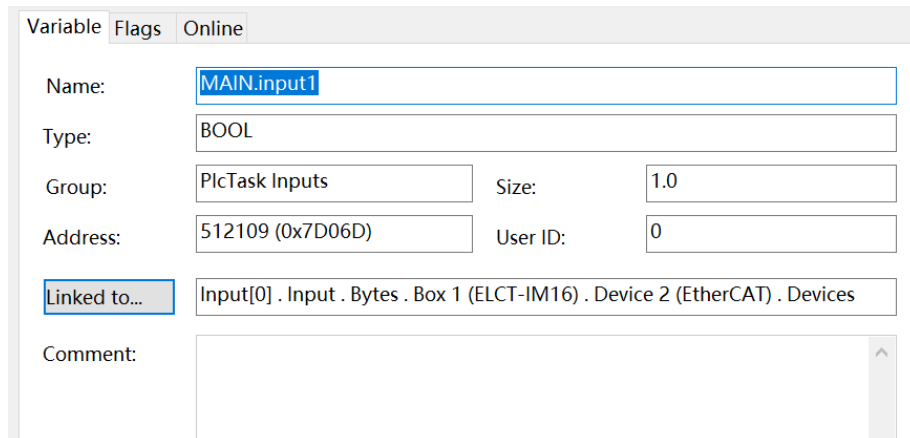
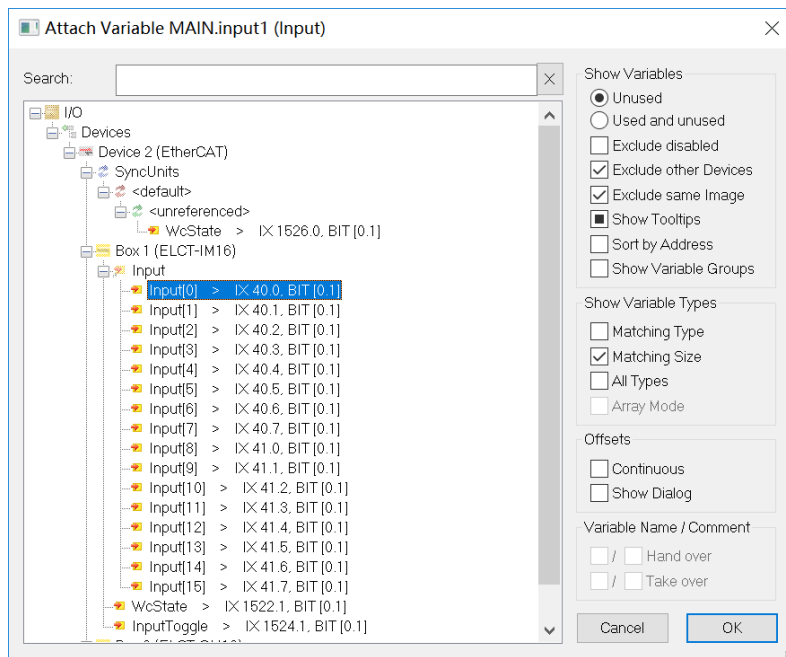




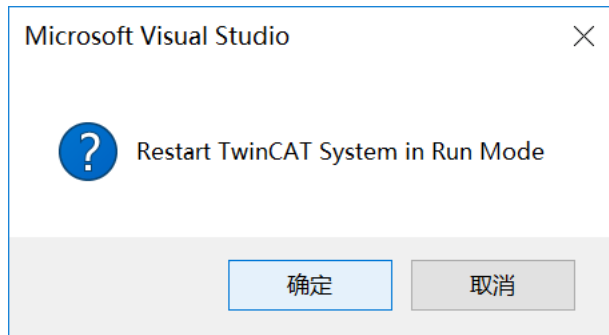
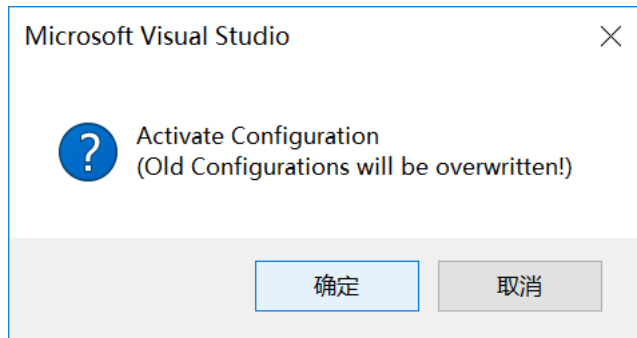
12、分别点“Untitled1 instance”中的输入输出变量开始进行变量连接，双击“MAIN,input1”--
--点击“Linked to”



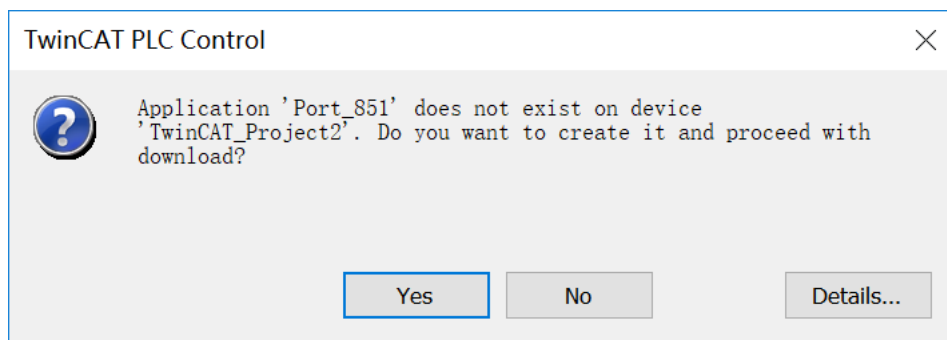
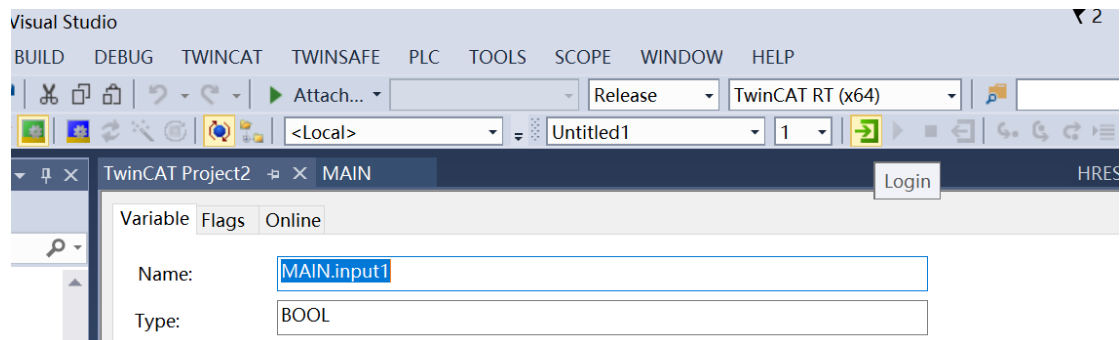
选择要连接的变量，按“OK”确定，(同理，将输出变量 output1 进行连接)

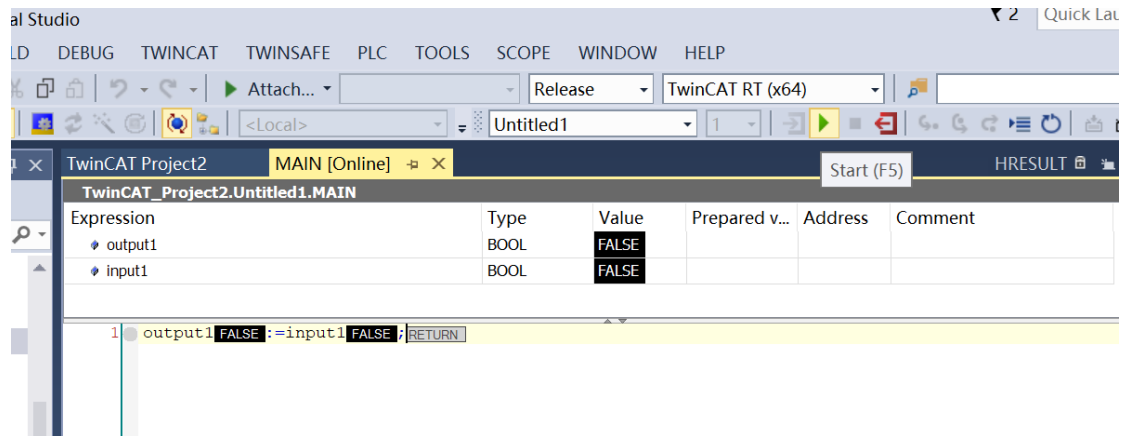


13、变量做好连接后，选择“TwinCAT”-----“Active Configuration”激活配置，依次点击“确定”---“确定”



14、点击绿色箭头“Login”，在弹出的对话框中点击“YES”





15、随后点击工具栏上的绿色箭头”Start”启动程序。

